

Bi-Con has helped energy suppliers and manufacturing companies compete in the global marketplace since 1959. The key to our success and growth are our outstanding service groups: Construction, Electrical, Manufacturing, and O&M Services. These groups function as specialized business units and more powerfully when combined to provide quality turnkey solutions. Bi-Con Engineering and The Safety Group provide additional specialized services. All of our service groups can

work together or independently to develop, engineer, manufacture, construct, and manage customer projects.

Bi-Con has the depth and expertise to meet the requirements and schedules for projects great and small. Regardless of whether your needs range from an entire facility plan, or a simple one-time renovation - We Safely Make It Happen®.



# Experience. The difference.

## EMPLOYEES BRING THE ENERGY TO ENERGY SUPPLY

Being in business for over 60 years, Bi-Con acknowledges the true key to success in the energy suppliers marketplace... the people. Bi-Con proudly offers customers over 3,500 years of cumulative experience acquired from 500+ employees. The dedicated employees of Bi-Con makes the difference.



### CONSTRUCTION

- Compressor stations / pumping stations
- Horsepower additions and replacements
- Metering and regulatory facilities
- Mainline valve and interconnects
- Launcher and receiver installations
- Design/Build or complete turnkey solutions



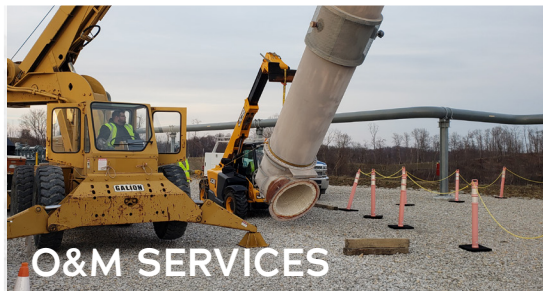
### ELECTRICAL

- Electrical distribution centers
- Emergency power systems
- ESD systems
- Instrumentation calibration
- Lighting systems / meggering and hipot testing
- Solar power system design and installation



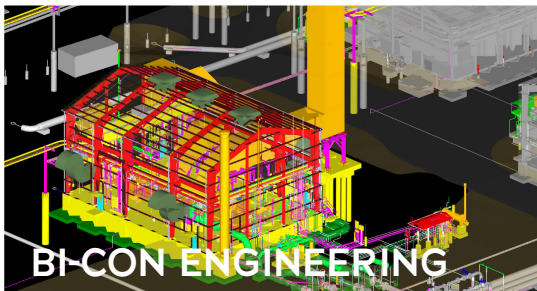
### MANUFACTURING

- ASME pressure vessel fabrication
- Blasting and coating systems
- Hydrostatic testing
- Main line valve sets and crossovers
- Prefabricated piping assemblies
- Structural steel fabrication
- API1104 certification



### O&M SERVICES

- Piping mods and valve upgrades
- Automation, controls system, MCC replacements, main services and disconnect upgrades
- Heat trace and insulation replacement
- Various tank replacement/projects
- Equipment sets/removal
- Emergency work



### BI-CON ENGINEERING

- 3D modeling and 3D laser scanning
- Construction support
- Facility design
- Procurement services
- Complete engineering and design solutions
- Compressor stations



### THE SAFETY GROUP

- On-site OSHA compliance audits
- 24/7 for emergency / accident / OSHA inspection response
- Incident investigation
- Safety training on a wide variety of topics
- Noise monitoring / mapping / exposure assessments



Learn more about  
**Bi-Con**